

An Overview of Wu Manufacturing Research Center

By

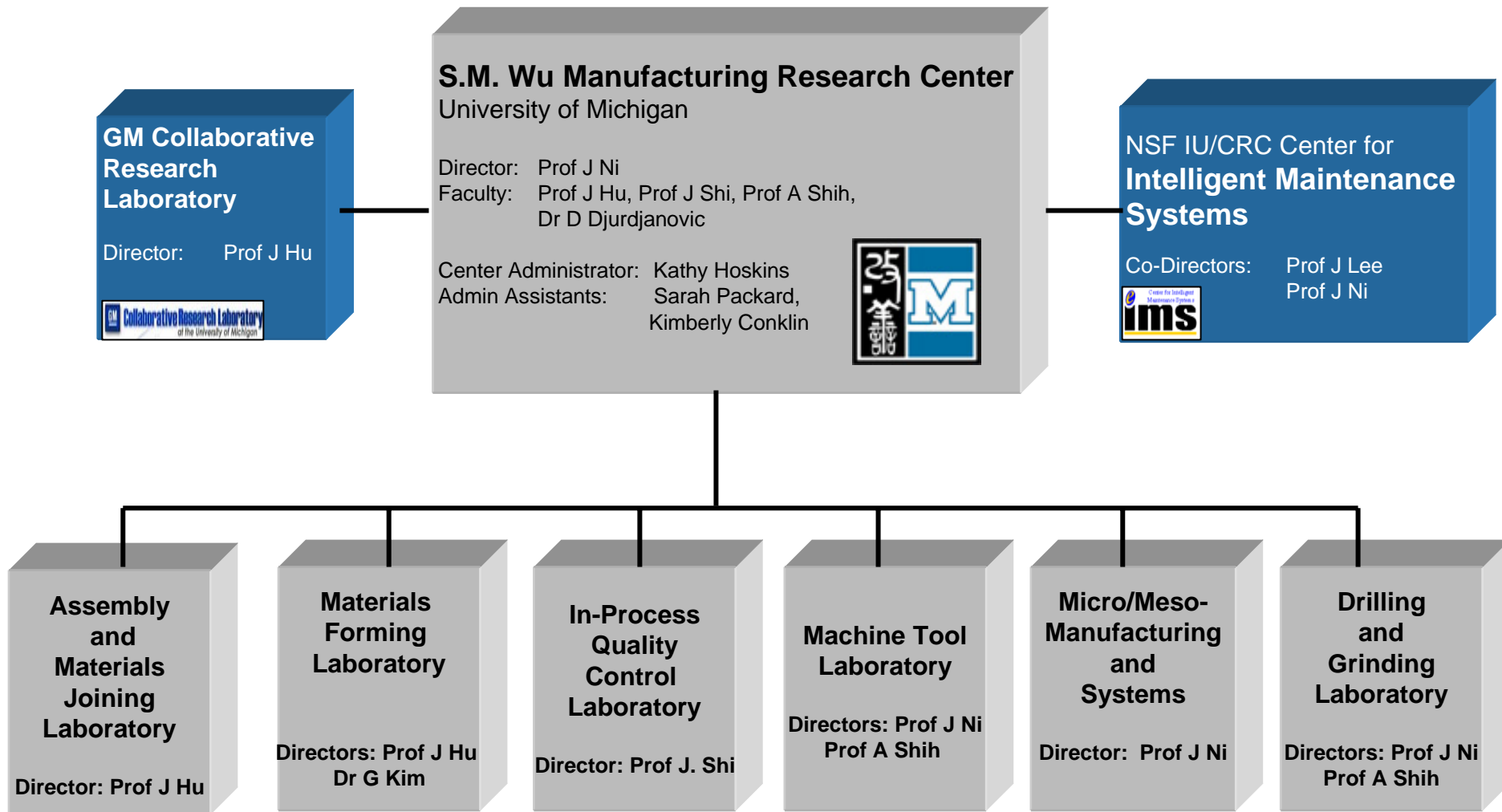
Professor Jun Ni

Shien-Ming (Sam) Wu Collegiate Professor of Manufacturing Science

Director, Wu Manufacturing Research Center



WuMRC Organization Chart



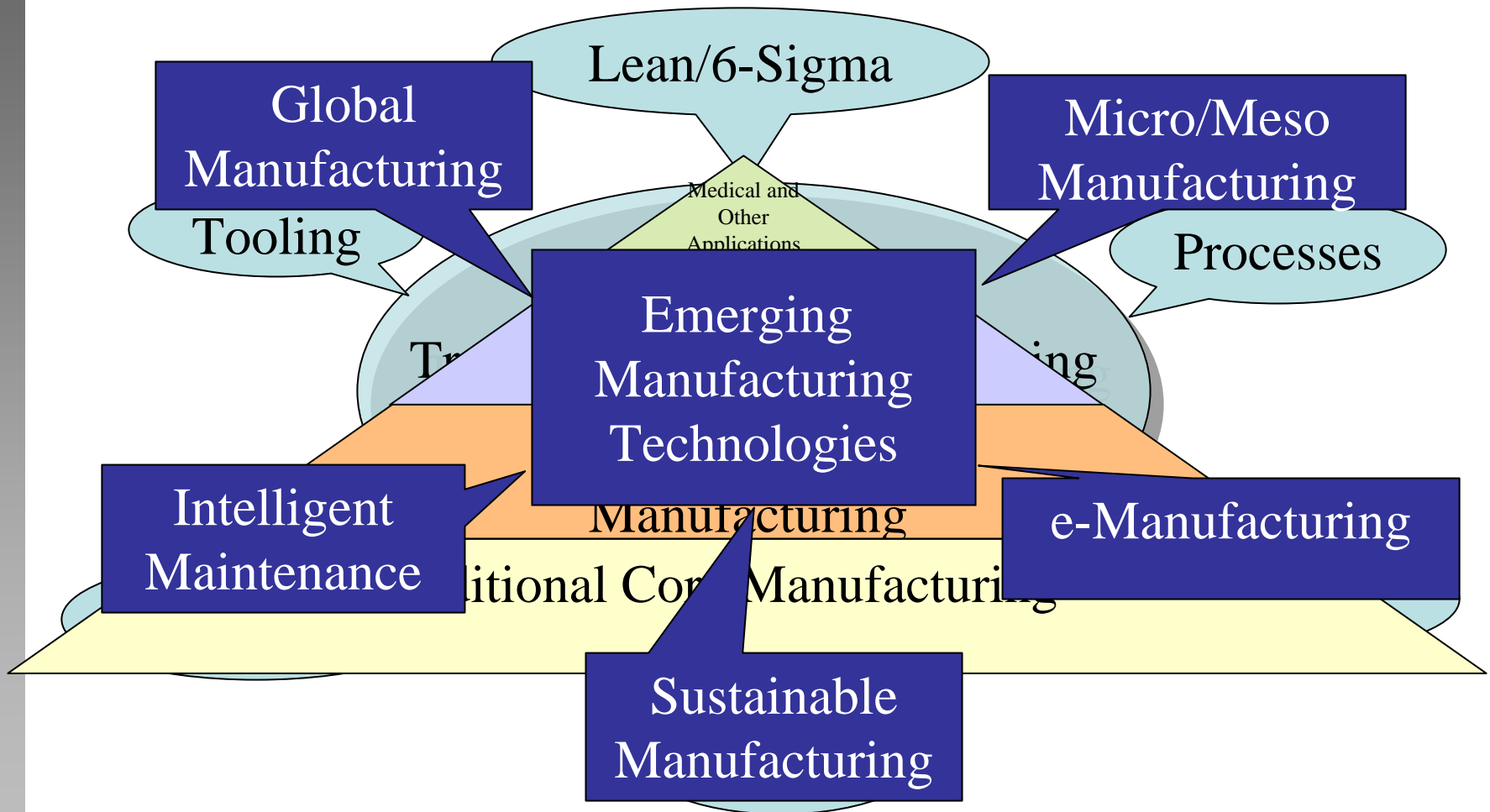
Theme of WuMRC Research

The aim is to achieve world-class manufacturing through improved

- Predictability
- Producibility
- Productivity



WuMRC's Strength



Sample Sponsors & Collaborators



Areas of WuMRC Expertise

- Assembly
 - Professor Jack Hu
- Stamping
 - Dr. Gap-Yong Kim, Professor Jack Hu
- Machining
 - Professor Jun Ni, Professor Albert Shih
- Quality
 - Professor Jan Shi
- Operations and Maintenance
 - Dr. Dragan Djurdjanovic
- Emerging Areas
 - Professor Albert Shih



For More Information

- Please visit our web site:

<http://wumrc.engin.umich.edu/>

